

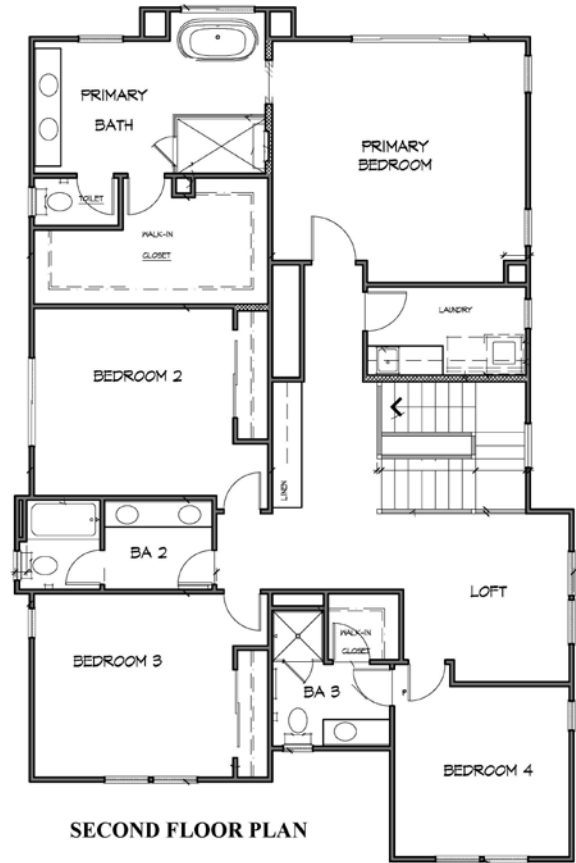
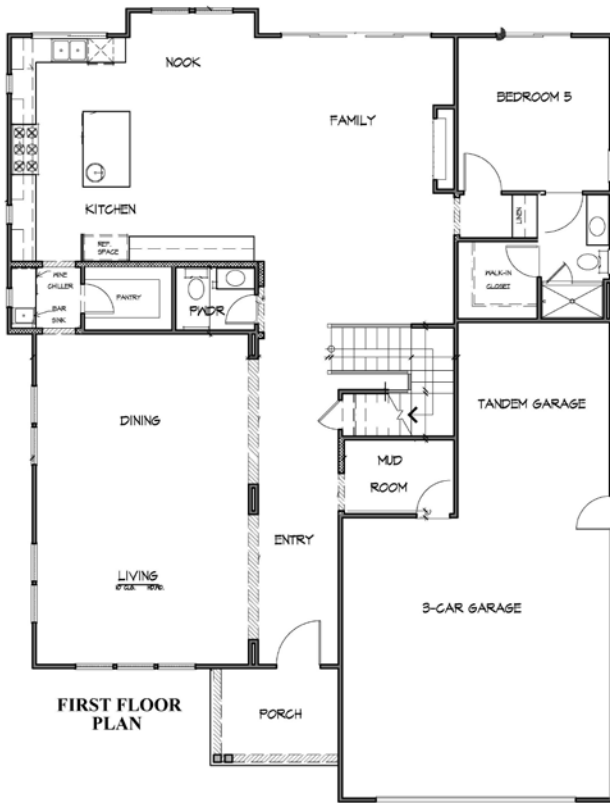
Welcome to Almadera

Plan One: Residences Two, Three and Five
1086 and 1080 Petroni Way, and 6809 Almaden Road, San Jose, CA
Approximately 3,756 square feet
5 bedrooms, 4-1/2 baths, 3-car tandem garage

Residences Three and Five – Craftsman Elevation



Residence Two – Farmhouse Elevation



This wonderful new home offers the complete package: luxury, modern amenities and value. The entry opens to a welcoming living room and adjacent dining room. The kitchen features a large central island and opens into the family room with fireplace providing a large comfortable space for social gatherings. A gracious bedroom suite and centrally located powder room round out the entry level. Upstairs is a grand owner's suite, a large secondary suite and two additional bedrooms that share a bathroom. A spacious loft lies at the top of the stairs affording a versatile area that can serve as a media room, study, game or hobby room. Enjoy easy access to shopping, employment in San Jose's coveted Almaden Valley, and desirable schools in Williams Elementary School, Bret Harte Middle School and Leland High School. Estimated completion date is Winter 2027.

Floorplans and elevation are artists' conceptions and may vary somewhat to actual construction and finishes. Price subject to change at any time.
Edenbridge Homes and Glenmere Properties, Inc. 21801 Stevens Creek Blvd., Suite 204, Cupertino, CA 95014 DRE 01518532
Community Sale Manager: Diane Downend DRE 01707018 650-766-1502 diane@edenbridgehomes.com