

Welcome to Waterstone

Plan 3 - Two-story, approximately 3,596 square feet
5 bedrooms, 4-1/2 baths and 3-car tandem garage
Features an entry level bedroom suite and flex space, upstairs loft
Lots 3, 5, 9 and 10



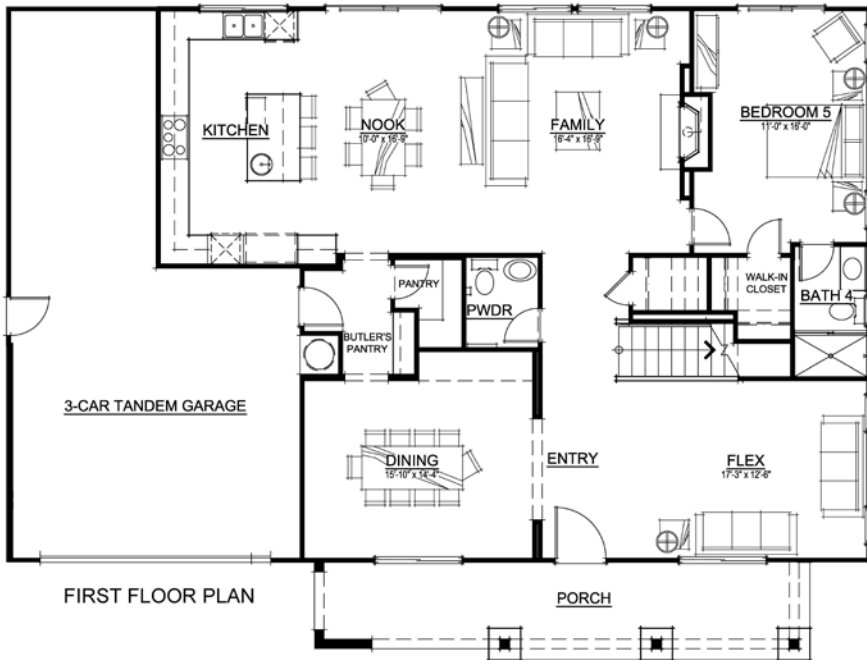
AGRARIAN FRONT ELEVATION



CONTEMPORARY FRONT ELEVATION



TRADITIONAL FRONT ELEVATION



FIRST FLOOR PLAN



SECOND FLOOR PLAN

The largest of the Waterstone collection affords comfort and elegance suitable to a busy lifestyle. As you enter the home, you are welcomed by a spacious formal dining room with a butler pantry pass-through to the kitchen and to the other side, a wonderfully versatile flex space allows you to tailor a room to how you live. The kitchen features a large central island situated adjacent to a sunny dining nook, all opening into the family room, providing a large comfortable space for social gatherings. The entry level rounds out with a welcoming and private bedroom suite to make visiting family and friends feel right at home. Meander to the top of the stairs to discover a large loft area that can serve as a media center, exercise, study, game or hobby room. Steps away is a grand owner's suite, an over-sized secondary suite and two additional bedrooms that share a bathroom. A roomy laundry room is centrally located among the upstairs bedrooms. Enjoy easy access to shopping, employment and schools, subject to confirmation by the school district, to be Browns Valley TK8 School and Napa High School. First deliveries projected in February 2025.

Floor-plans and elevation are artists' conceptions and may vary somewhat to actual construction and finishes. Square footages are approximations. Price subject to change at any time.

Edenbridge Homes and Glenmere Properties, Inc.
21801 Stevens Creek Boulevard, Suite 204, Cupertino, CA
669-231-4240 DRE 01518532
Community Sale Manager: Diane Downend DRE 01707018
650-766-1502 diane@edenbridgehomes.com
www.edenbridgehomes.com
Effective date February 12, 2025

Equal Housing Opportunity 