

# Welcome to Waterstone

Plans 2A and 2B – Two-stories, approximately 3,019 square feet

5 bedrooms, 4-1/2 baths, including entry level junior suite, 3-car split garage

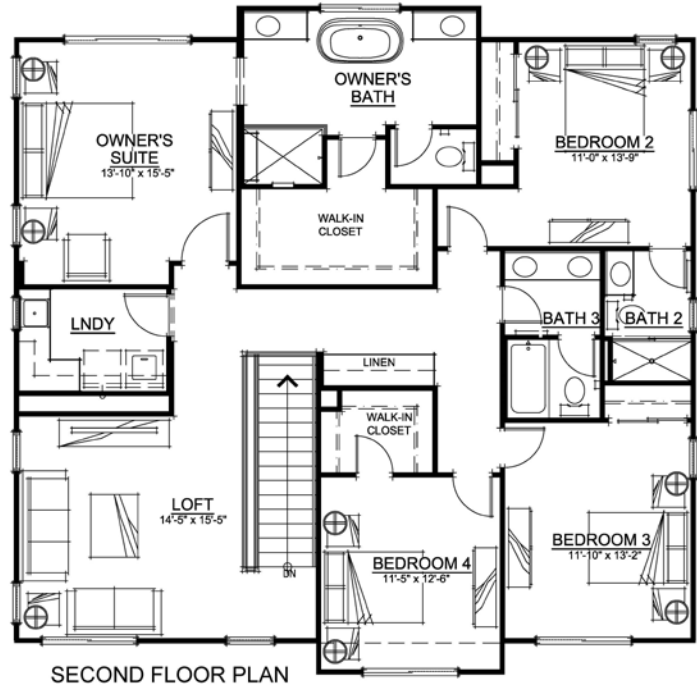
Note: The Agrarian and Traditional Plan 2 elevations (Lots 1 and 8) have split, swing-in 3-car garages, while the Contemporary elevation features a front-facing 3-car garage and a larger Bedroom 5 closet configuration



TRADITIONAL FRONT ELEVATION



AGRARIAN FRONT ELEVATION



This beautiful new home offers the complete package: luxury, modern amenities and convenient location. As you enter the home, a conveniently located flex room offers space to be utilized in a manner that best suits your lifestyle: perhaps a formal dining room, a home office, a media room, or a library, limited solely by your own imagination. An entry level junior suite offers comfort and privacy to visiting family or friends. The kitchen features a large central island situated adjacent to a spacious nook area, all opening into the family room, providing a large comfortable space for social gatherings. Upstairs is a grand owner's suite, a junior suite and two additional bedrooms that share a bathroom and a centrally located laundry. If that's not enough versatility, at the top of the stairs lies a grand loft area, flooded with natural light, that can serve a study-central, a media room or even an exercise room.

Enjoy easy access to shopping, employment and schools. Subject to confirmation by the school district, neighborhood schools are Browns Valley TK8 School and Napa High School. First deliveries projected in February 2025.

Floor-plans and elevation are artists' conceptions and may vary somewhat to actual construction and finishes. Square footages are approximations. Price subject to change at any time.

Edenbridge Homes and Glenmere Properties, Inc. 21801 Stevens Creek Boulevard, Suite 204, Cupertino, CA 669-231-4240 DRE 01518532  
Community Sales Manager: Diane Downend DRE 01707018 650-766-1502 [diane@edenbridgehomes.com](mailto:diane@edenbridgehomes.com)

[www.edenbridgehomes.com](http://www.edenbridgehomes.com)

Effective Date February 12, 2025

Equal Housing Opportunity 