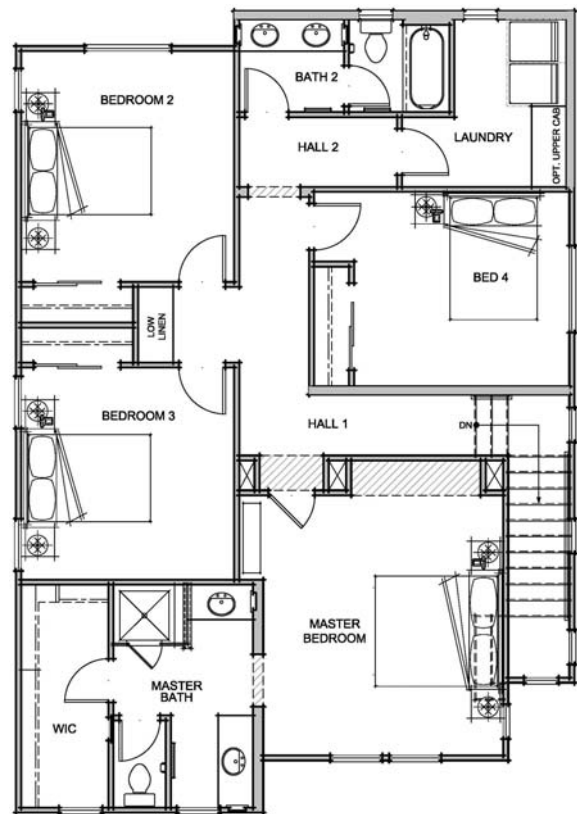
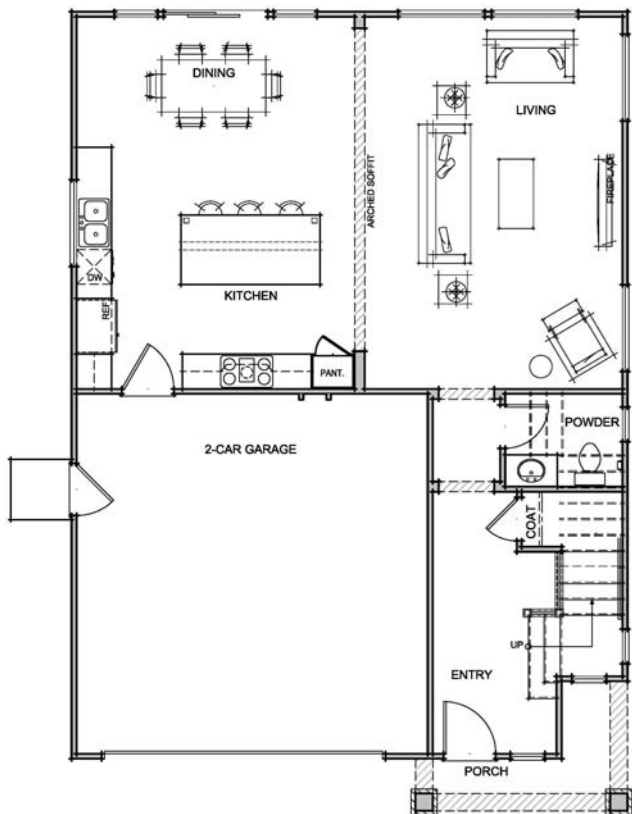


Welcome to Sonterra

Plan 2 - Approximately 2,236 square feet
4 bedrooms, 2-1/2 baths



This wonderful new home offers the complete package: luxury, modern amenities and convenient location. The kitchen features a large central island situated adjacent to a spacious dining area, all opening into the living room with a fireplace providing a large comfortable space for social gatherings. A centrally located powder room rounds out the entry level. Upstairs is a grand master suite, and three additional bedrooms that share a bathroom. Enjoy easy access to shopping, employment and coveted schools in Simonds Elementary School, Castillero Middle School and Leland High School. Estimated completion date is Spring 2018.

Floorplans and elevation are artists' conceptions and may vary somewhat to actual construction and finishes.
Price subject to change at any time.

Edenbridge Homes and Glenmere Properties, Inc. 21771 Stevens Creek Boulevard, Suite 200A, Cupertino, CA 669-231-4242 DRE 01518532
Community Sale Manager: Diane Downend DRE 01707018 650-766-1502 diane@edenbridgehomes.com