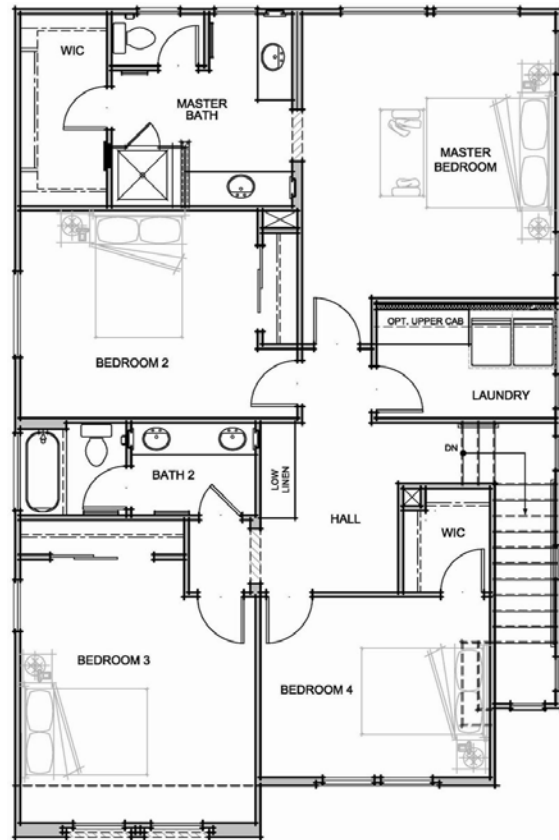
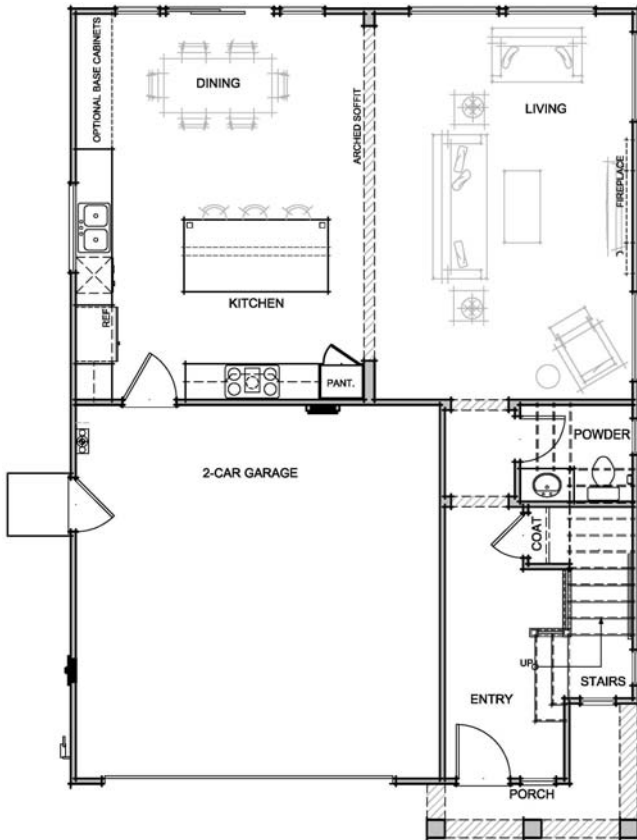


# Welcome to Sonterra

Plan 1 - Approximately 2,276 square feet  
4 bedrooms, 2-1/2 baths



This beautiful home was designed with elegance and comfort in mind. The gourmet kitchen featuring a large central island flows into a spacious living room with a cozy fireplace. The large informal dining room is perfect for gracious and comfortable entertaining. The first floor living area is rounded out with a powder bath. Upstairs is a large master suite, a conveniently located laundry room, and three additional bedrooms sharing a bath.

Enjoy easy access to shopping, employment and coveted schools in Simonds Elementary School, Castilero Middle School and Leland High School. Estimated completion date is early 2018.

Floorplans and elevation are artists' conceptions and may vary somewhat to actual construction and finishes.  
Price subject to change at any time.

Edenbridge Homes and Glenmere Properties, Inc. 21771 Stevens Creek Boulevard, Cupertino, CA 669-231-4242 DRE 01518532  
Community Sales Manager: Diane Downend DRE 01707018 650-766-1502 [diane@edenbridgehomes.com](mailto:diane@edenbridgehomes.com)

[www.edenbridgehomes.com](http://www.edenbridgehomes.com)

Effective date January 26, 2017

Equal Housing Opportunity 