

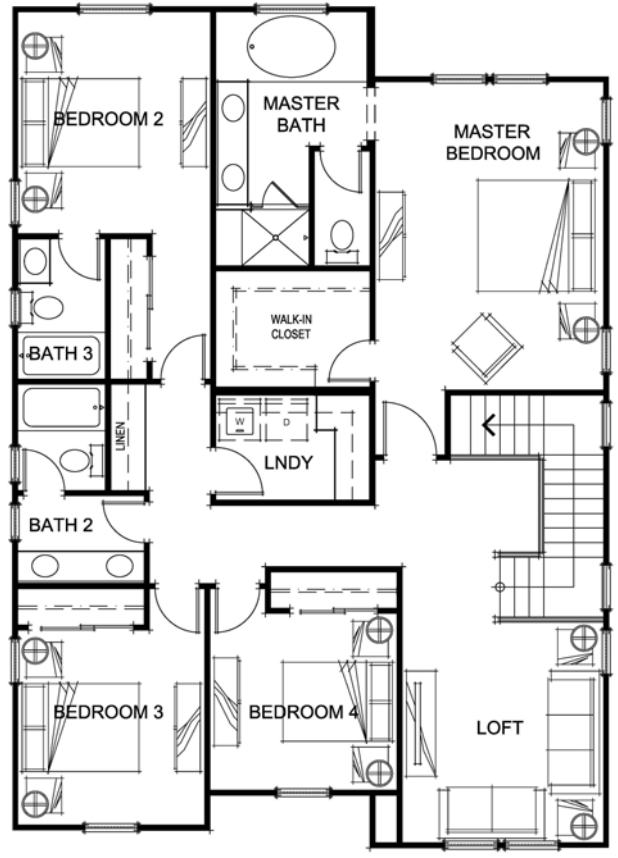
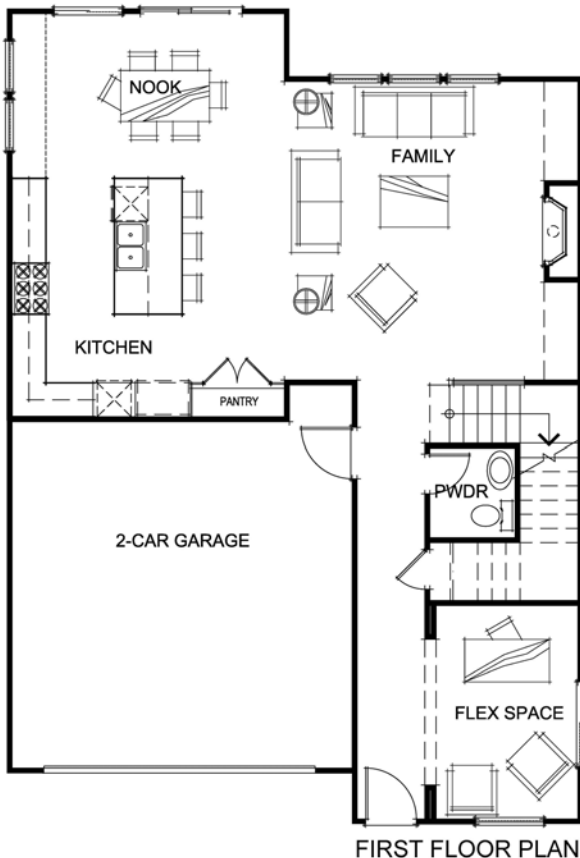
Welcome to Roberts Ranch in Castro Valley

Plan One - Approximately 2,527 square feet
4 bedrooms, 3-1/2 baths, and two-car garage



These beautiful Plan One homes off Crow Canyon Place were designed with elegance and comfort in mind. The gourmet kitchen featuring a large central island flows into a nook area and a spacious family room with a cozy fireplace. The first floor living area is rounded out with a powder bath and a flex space off the entry that can serve as a parlor, office or library.

Upstairs delivers a large master suite, a junior suite, and two additional bedrooms that share a bath, a versatile loft area and a conveniently located laundry room.



Enjoy easy access to shopping, employment, schools and transportation corridors.
Estimated completion date is late 2017.

Floorplans and elevation are artists' conceptions and may vary somewhat to actual construction and finishes.

Price subject to change at any time.

Edenbridge Homes and Glenmere Properties, Inc. 21771 Stevens Creek Bl, Ste 200A, Cupertino, CA 95014 669.231-4240 DRE 01518532
Community Sales Manager: Diane Downend DRE 01707018 650-766-1502 diane@edenbridgehomes.com