

# Welcome to Pacific Ridge

**Plan 3 - Approximately 3,774 square feet  
5 bedrooms, 4-1/2 baths and Three Car Garage - Single Story**

**Coming Soon- Nineteen New Homes in Half Moon Bay!**



Style, design, quality and you are the cornerstones on which Edenbridge Homes has based the Pacific Ridge experience. One look and you'll see everything you have imagined a luxury home should be – sumptuous details, graceful design, impeccable craftsmanship and uncompromising comfort. The impressive interiors feature an array of elegant appointments including granite slab countertops, stylish wood cabinets with stately finishes, gourmet stainless steel appliances and more. Lot sizes vary from 11,000 s.f. to almost 19,000 s.f. with an overall average size of just over 14,000 s.f. Pacific Ridge is the pinnacle of new home living that only the truly discerning home buyer will appreciate.

The distinctive exteriors feature farmhouse inspired architecture in varied styles with designer color palettes and accents. The four spacious floor-plans include a single story and two-story designs, each with at least one entry level bedroom and three-car garage.

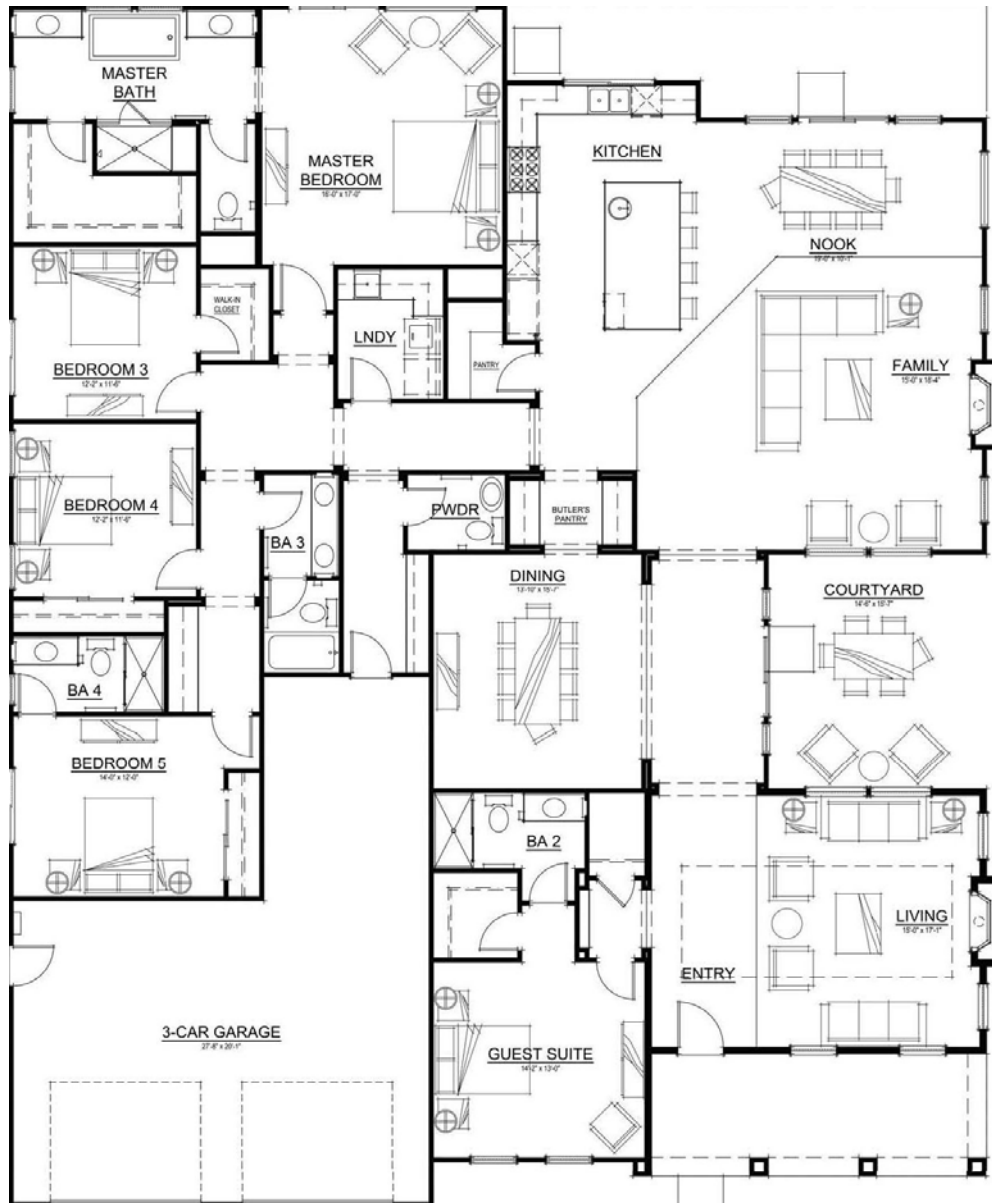
Adding to the homes themselves is the desirable Coastside lifestyle. Nestled in the foothills, the intimate enclave is conveniently located close to downtown Half Moon Bay with inviting shops and charming restaurants.

Edenbridge Homes  
Represented exclusively by  
Glenmere Properties, Inc.  
21771 Stevens Creek Blvd., Ste. 200A  
Cupertino, CA 95014  
DRE 01518532  
[www.edenbridgehomes.com](http://www.edenbridgehomes.com)  
Equal Housing Opportunity  
Contact: Diane Downend 650-766-1502  
BRE 01707018 [diane@edenbridgehomes.com](mailto:diane@edenbridgehomes.com)



# Welcome to Pacific Ridge

Plan 3 - Approximately 3,774 square feet  
5 bedrooms, 4-1/2 baths and Three Car Garage - Single Story



Floorplans and elevation are artists' conceptions and may vary somewhat to actual construction and finishes. Price is subject to change at any time.

Edenbridge Homes  
Represented exclusively by  
Glenmere Properties, Inc.  
21771 Stevens Creek Blvd., Ste. 200A  
Cupertino, CA 95014  
DRE 01518532  
www.edenbridgehomes.com  
Equal Housing Opportunity  
Contact: Diane Downend 650-766-1502  
diane@edenbridgehomes.com  
BRE 01707018

This gorgeous single-story home brings back the luxury and comfort of yesteryear with its shaded porch and courtyard. A grand master suite, two junior suites and two more bedrooms that share a bath, all on one level! One guest suite resides near the entry and can double as an office. The formal living and dining rooms are strategically situated adjacent to an elegant courtyard to invite the outdoors in. For the discerning gourmet, the welcoming kitchen features all of the appointments needed to dote on family, and to host guests with style and grace. The kitchen features a large central island and walk-in pantry and opens to a nook and family room with an elegant fireplace, perfect for entertaining. Rounding out this lovely home are a centrally located powder room and laundry room.