

# Welcome to Pacific Ridge

**Plan 2 - Approximately 3,664 square feet  
4 bedrooms, 3-1/2 baths and Three Car Garage - Two Levels**

**Coming Soon- Nineteen New Homes in Half Moon Bay!**



Style, design, quality and you are the cornerstones on which Edenbridge Homes has based the Pacific Ridge experience. One look and you'll see everything you have imagined a luxury home should be – sumptuous details, graceful design, impeccable craftsmanship and uncompromising comfort. The impressive interiors feature an array of elegant appointments including granite slab countertops, stylish wood cabinets with stately finishes, gourmet stainless steel appliances and more. Lot sizes vary from 11,000 s.f. to almost 19,000 s.f. with an overall average size of just over 14,000 s.f. Pacific Ridge is the pinnacle of new home living that only the truly discerning home buyer will appreciate.

The distinctive exteriors feature farmhouse inspired architecture in varied styles with designer color palettes and accents. The four spacious floor-plans include a single story and two-story designs, each with at least one entry level bedroom and three-car garage.

Adding to the homes themselves is the desirable Coastside lifestyle. Nestled in the foothills, the intimate enclave is conveniently located close to downtown Half Moon Bay with inviting shops and charming restaurants.

Edenbridge Homes  
Represented exclusively by  
Glenmere Properties, Inc.  
21771 Stevens Creek Blvd., Ste. 200A  
Cupertino, CA 95014  
DRE 01518532

[www.edenbridgehomes.com](http://www.edenbridgehomes.com)

Equal Housing Opportunity  
Contact: Diane Downend 650-766-1502

BRE 01707018 [diane@edenbridgehomes.com](mailto:diane@edenbridgehomes.com)



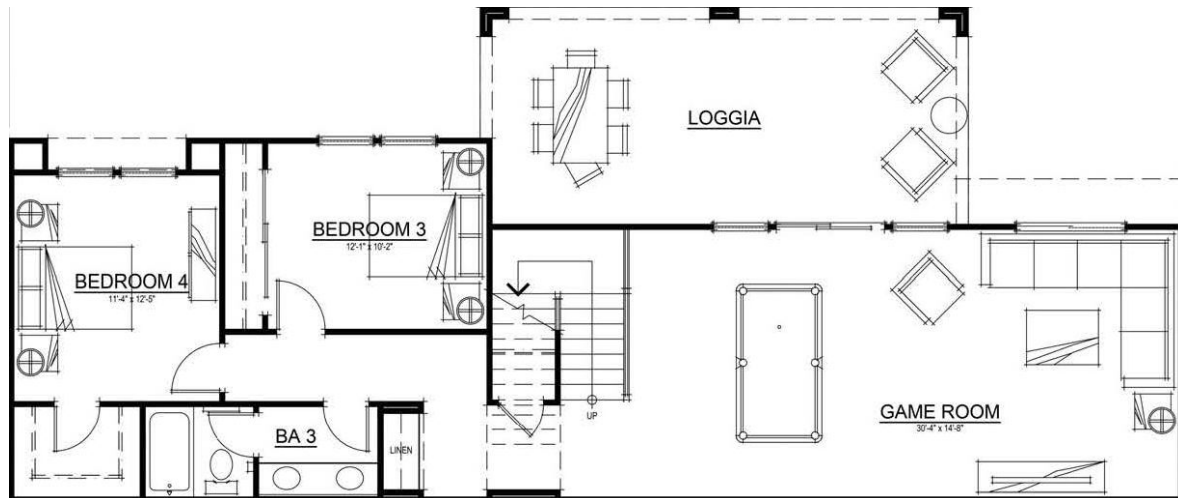
# Welcome to Pacific Ridge

**Plan 2 - Approximately 3,664 square feet  
4 bedrooms, 3-1/2 baths and Three Car Garage - Two Levels**



Looking for a home with the master suite on the entry level with a nearby guest suite for family or visiting friends? You've found your new home! This home was designed with elegance and comfort in mind. Formal living and dining rooms adjoin the entry and pass through to a gourmand's dream kitchen. The chef in the house is an active participant in social gatherings with an adjacent grand family room and terrace, perfect for entertaining either indoors or outdoors! A centrally located laundry room and powder room round out the entry level. Meander downstairs to find two more private bedrooms that share a bath, and a versatile game room that spills out to a spacious loggia for tranquil outdoor living.

**Entry Level**



**Lower Level**

Floorplans and elevation are artists' conceptions and may vary somewhat to actual construction and finishes. Price is subject to change at any time.

Edenbridge Homes  
 Represented exclusively by  
 Glenmere Properties, Inc.  
 21771 Stevens Creek Blvd., Ste. 200A  
 Cupertino, CA 95014  
 DRE 01518532  
[www.edenbridgehomes.com](http://www.edenbridgehomes.com)  
 Equal Housing Opportunity  
 Contact: Diane Downend  
 650-766-1502  
 BRE 01707018  
[diane@edenbridgehomes.com](mailto:diane@edenbridgehomes.com)