

# Welcome to Pacific Ridge

**Plan 1 - Approximately 3,406 square feet  
4 bedrooms, 3-1/2 baths and Three Car Garage - Two Story**

**Coming Soon- Nineteen New Homes in Half Moon Bay!**



Style, design, quality and you are the cornerstones on which Edenbridge Homes has based the Pacific Ridge experience. One look and you'll see everything you have imagined a luxury home should be – sumptuous details, graceful design, impeccable craftsmanship and uncompromising comfort. The impressive interiors feature an array of elegant appointments including granite slab countertops, stylish wood cabinets with stately finishes, gourmet stainless steel appliances and more. Lot sizes vary from 11,000 s.f. to almost 19,000 s.f. with an overall average size of just over 14,000 s.f. Pacific Ridge is the pinnacle of new home living that only the truly discerning home buyer will appreciate.

The distinctive exteriors feature farmhouse inspired architecture in varied styles with designer color palettes and accents. The four spacious floor-plans include a single story and two-story designs, each with at least one entry level bedroom and three-car garage.

Adding to the homes themselves is the desirable Coastside lifestyle. Nestled in the foothills, the intimate enclave is conveniently located close to downtown Half Moon Bay with inviting shops and charming restaurants.

Edenbridge Homes  
Represented exclusively by  
Glenmere Properties, Inc.  
21771 Stevens Creek Blvd., Ste. 200A  
Cupertino, CA 95014  
DRE 01518532  
www.edenbridgehomes.com  
Equal Housing Opportunity  
Contact: Diane Downend 650-766-1502  
BRE 01707018 diane@edenbridgehomes.com

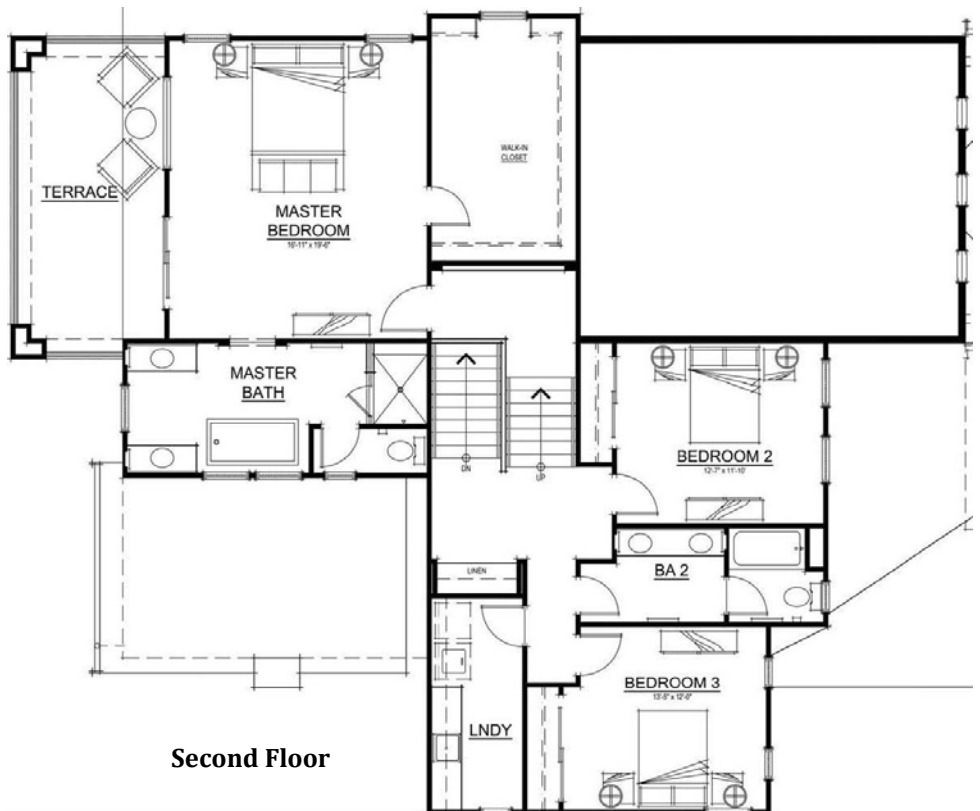


# Welcome to Pacific Ridge

**Plan 1 - Approximately 3,406 square feet  
4 bedrooms, 3-1/2 baths and Three Car Garage - Two Story**



The entry of this stylish home opens to a grand formal living room and dining room area. A spacious kitchen and nook with a central island is adjacent to the family room and steps away from the formal dining room. A downstairs junior suite offers comfort and convenience for guests or family members. A sunny loggia affords a tranquil setting for outdoor living. Upstairs features a large master suite, two additional bedrooms that share a bath, and a centrally located laundry room.



Floorplans and elevation are artists' conceptions and may vary somewhat to actual construction and finishes.  
Price is subject to change at any time.

Edenbridge Homes  
Represented exclusively by  
Glenmere Properties, Inc.  
21771 Stevens Creek Blvd., Ste. 200A  
Cupertino, CA 95014  
DRE 01518532  
www.edenbridgehomes.com  
Equal Housing Opportunity  
Contact: Diane Downend 650-766-1502

