

Welcome to Corvina

**Plan Two - Approximately 1,907 square feet
4 bedrooms, 3 baths, and two-car garage**



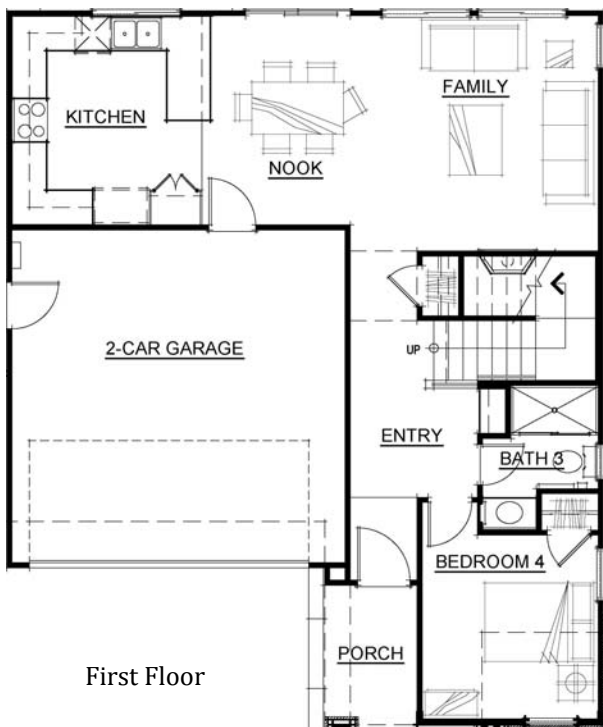
Craftsman



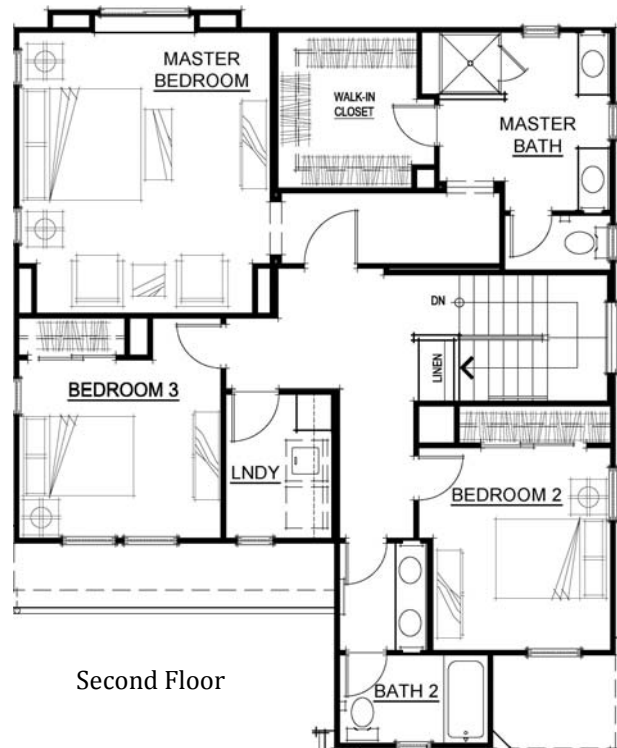
Bungalow

These wonderful Plan Two homes on Wine Country Avenue offer the complete package: luxury, modern amenities and value. The gourmand's kitchen opens into a spacious nook and family room with a fireplace providing a comfortable space for social gatherings. The first floor living area is rounded out with a full bath and a downstairs bedroom.

Upstairs delivers a large master suite, two additional bedrooms sharing a bath, and a conveniently located laundry room.



First Floor



Second Floor

Enjoy easy access to shopping, employment and schools in Northwood Elementary, Redwood Middle and Vintage High Schools. Estimated completion date is January, 2017.

Floorplans and elevation are artists' conceptions and may vary somewhat to actual construction and finishes.
Price subject to change at any time.

Edenbridge Homes and Glenmere Properties, Inc. 21771 Stevens Creek Bl, Ste 200A, Cupertino, CA 95014 669.231-4240 DRE 01518532
Community Sales Manager: Diane Downend DRE 01707018 650-766-1502 diane@edenbridgehomes.com

www.edenbridgehomes.com

Effective date July 10, 2016

Equal Housing Opportunity 