

Welcome to Corvina

Plan One - Approximately 1,891 square feet
4 bedrooms, 3 baths, and two-car garage

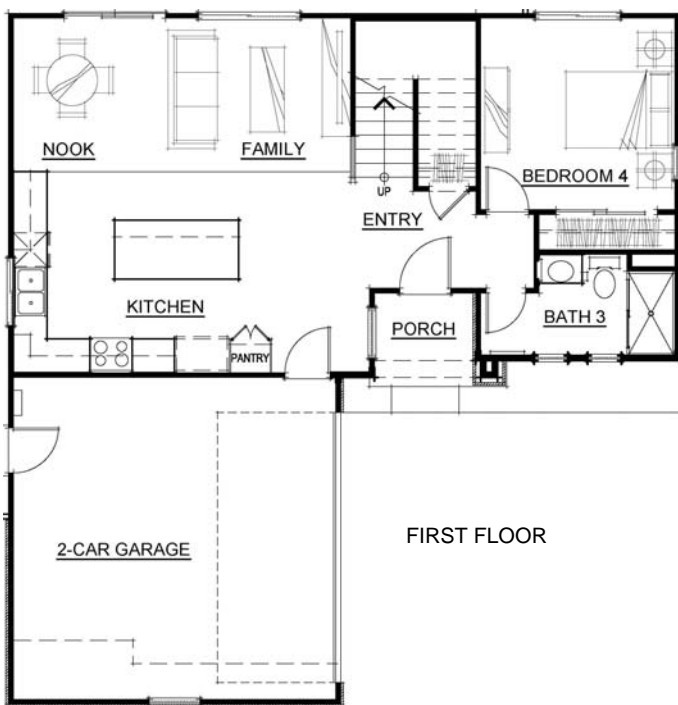


Craftsman



Bungalow

These beautiful Plan One homes on Wine Country Avenue were designed with elegance and comfort in mind. The gourmet kitchen featuring a large central island flows into a nook area and a spacious family room with a cozy fireplace. The first floor living area is rounded out with a full bath and a downstairs bedroom.



Upstairs delivers a large master suite, two additional bedrooms sharing a bath, and a conveniently located laundry room.

Enjoy easy access to shopping, employment and schools in Northwood Elementary, Redwood Middle and Vintage High Schools. Estimated completion date is March and April 2017.

Floorplans and elevation are artists' conceptions and may vary somewhat to actual construction and finishes.
Price subject to change at any time.

Edenbridge Homes and Glenmere Properties, Inc. 21771 Stevens Creek Bl, Ste 200A, Cupertino, CA 95014 669.231-4240 DRE 01518532
Community Sales Manager: Diane Downend DRE 01707018 650-766-1502 diane@edenbridgehomes.com

www.edenbridgehomes.com

Effective date December 6, 2016

Equal Housing Opportunity 