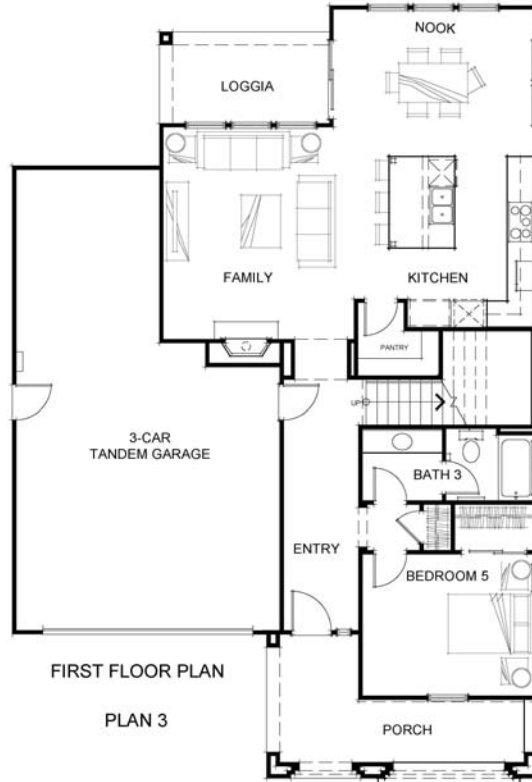


# Welcome to Copperleaf

**Residence Three - Two story approximately 2,906 sf**  
**5 bedrooms, 3 baths with loft and 3 car tandem garage**  
**Some lots feature a detached 1BR/ 1BA studio of an additional 402 sf**



This stunning executive home stands out in the Copperleaf collection as the gourmand's dream. The kitchen's large central island is inviting to family and friends where they are sure to keep the chef in the home company while preparing for social gatherings in the spacious nook and family room, with its elegant fireplace. For overnight guests or resident family members, the first floor guest suite affords privacy and all the creature comforts. Upstairs is a luxurious master suite with a grand walk-in closet, and three additional bedrooms that share a bath. A spacious laundry room is conveniently located at the top of the stairs. Rounding out the upstairs is a versatile loft area that can serve as a media center, study room, game or hobby room.

Estimated completion date is late 2018.

Floorplans and elevation are artists' conceptions and may vary somewhat to actual construction and finishes. Price is subject to change at any time.

Edenbridge Homes, exclusively represented by Glenmere Properties, Inc.  
 21771 Stevens Creek Bl., Ste. 200A, Cupertino, CA (669) 231-4242  
 BRE 01518532  
 Community Sales Manager:  
 Diane Downend BRE 01707018 (650)766-1502  
[diane@edenbridgehomes.com](mailto:diane@edenbridgehomes.com)  
[www.edenbridgehomes.com](http://www.edenbridgehomes.com)  
 Equal Housing Opportunity 