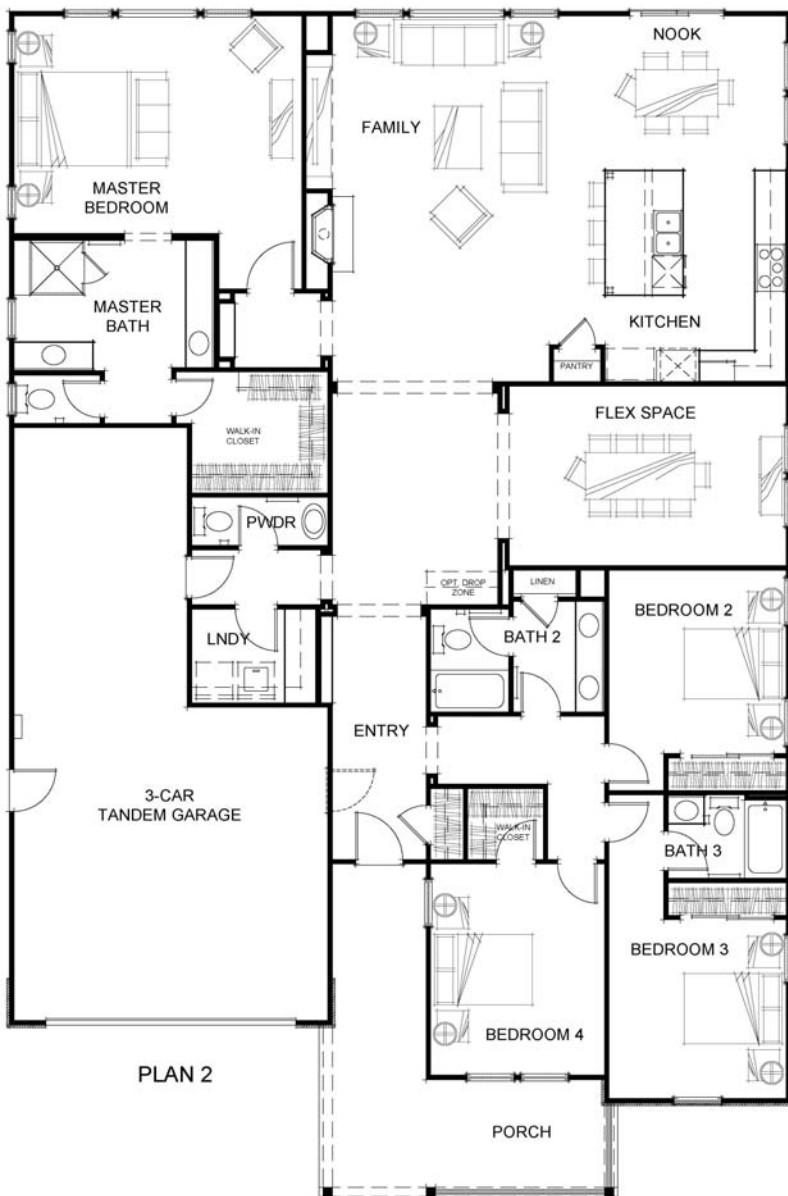
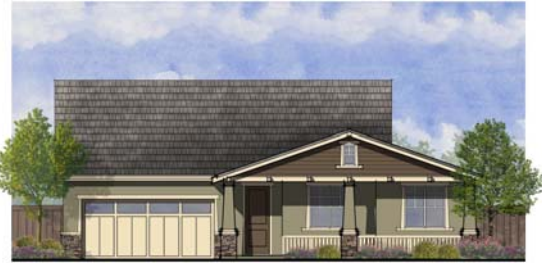


Welcome to Copperleaf

Residence Two - Single story approximately 2,670 square feet
4 bedrooms, 3 ½ baths, 3 car tandem garage



This gorgeous home brings modern convenience to the comfort and tradition of single story living. The spacious family room with its lovely fireplace graciously welcomes family and friends to share treasured time with their hosts. The kitchen's large island and breakfast nook, rich with natural streaming exterior light, make day to day living the picture of comfort. Adjacent to the kitchen is a wonderfully versatile flex space that can serve as a formal dining room, a den or office, or a media center, depending upon your lifestyle. The living area is rounded out with three secondary bedrooms and two baths, providing lovely, spacious and comfortable accommodations for family and friends. A large laundry room is centrally-located to conveniently service this lovely home. Completion is projected for late 2018.

Floorplans and elevation are artists' conceptions and may vary somewhat to actual construction and finishes. Price is subject to change at any time.

Edenbridge Homes, exclusively represented by Glenmere Properties, Inc. 21771 Stevens Creek Bl, Ste 200A, Cupertino, CA (669) 231-4242 DRE 01518532
Community Sales Manager: Diane Downend DRE 01707018 (650)766-1502 diane@edenbridgehomes.com
www.edenbridgehomes.com