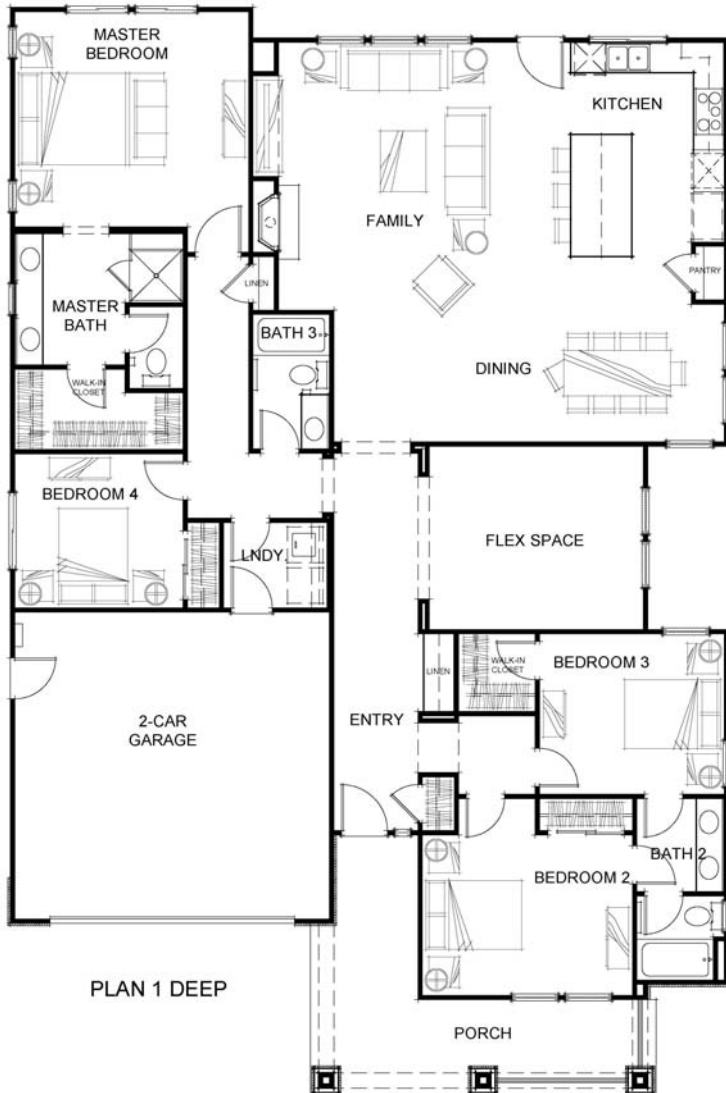


Welcome to Copperleaf

Residence One - Single Story approximately 2,332 square feet
4 bedrooms, 3 baths, 2 car garage



This beautiful single story home was designed with elegance and comfort in mind. Adjacent to the stylish gourmet kitchen, with its central island, pantry and nook is a spacious and welcoming family room with a lovely fireplace and wealth of natural light. Luxury and serenity await in the vast master suite featuring an oversized walk-in closet. Enter from the garage to find a conveniently located laundry to serve the household. Steps away are two bedrooms that share a bath and a fourth bedroom adjacent to the master. Central to the home is a versatile flex space that can serve as a den or office, media center, or study central for the students in the house.

Completion is projected for late 2018.

Floorplans and elevation are artists' conceptions and may vary somewhat to actual construction and finishes. Price is subject to change at any time.

Edenbridge Homes, exclusively represented by Glenmere Properties, Inc. 21771 Stevens Creek Bl., Ste. 200A, Cupertino, CA (669) 231-4242 DRE 01518532

Community Sales Manager: Diane Downend BRE 01707018 (650)766-1502 diane@edenbridgehomes.com

www.edenbridgehomes.com

Equal Housing Opportunity 